

50,900sf Warehouse Space Available Sept. 2017

3350 Bynum Blvd.

Located near Lincoln AL Honda Plant & Anniston Army Depot

A very rare warehouse asset in central Alabama will be available in September 2017. This is a strategic location for any manufacturer or distributor who services the Honda

Manufacturing Plant of Alabama, or the Anniston Army Depot. A two-tenant facility, the 50,900sf warehouse vacancy offers ample parking, high ceilings, dock and ground access, and room for possible expansion. A long term tenant is preferred.



HIGHLIGHTS

Year Built	2011
Available office	1,800 sf
Available Warehouse	49,100 sf
Total Building Size	63,500 sf
Building Dimensions	200'x250'
Clear Ceiling Height	30'
Height at Eaves	25'
Parcel Size	5.7 acres
Parking	3+ acres



Call Joe Warren for more information

Tel 619/342-7207 x5

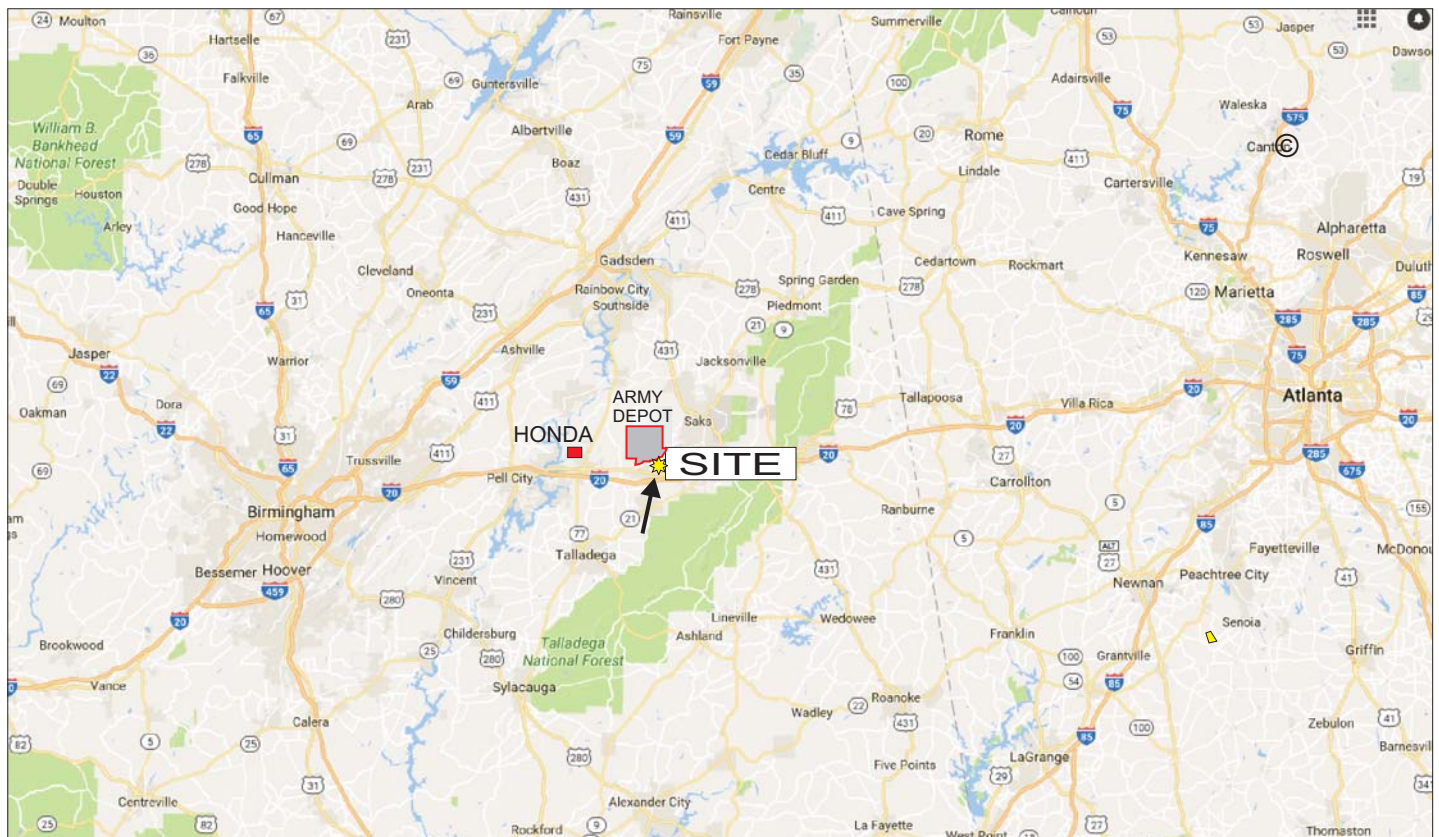
WEBSITE WWW.SMISER.NET

managed exclusively by
Smiser Family Properties

Email HELP@smiser.net

Location Maps

©Google Maps



Call Joe Warren for more information

Tel 619/342-7207 x5

WEBSITE WWW.SMISER.NET

managed exclusively by
Smiser Family Properties

Email HELP@smiser.net

PHOTOS



Call Joe Warren for more information
Tel 619/342-7207 x5

managed exclusively by
Smiser Family Properties
Email HELP@smiser.net

WEBSITE WWW.SMISER.NET

SITEPLAN

OLD AL STATE HIGHWAY #202 (AKA BYNUM BLVD)
(Variable ROW)
EDGE OF PAVEMENT

436.42'
N 71°09'28" E
ROW Marker
19+00

A BOUNDARY/AS BUILT SURVEY FOR
LONLEAF WAREHOUSE SERVICES, LLC.
LOCATED IN THE NE 1/4 OF THE SE 1/4
SECTION 19, TOWNSHIP 16 SOUTH; RANGE 7 EAST
CALHOUN COUNTY, ALABAMA
FEBRUARY 2nd, 2016



LEGEND

- These standard symbols may be found in the drawing.
- Iron Pin Found (as noted)
 - Iron Pin Set (capped "Turner")
 - △ Calculated Point
 - POC Point of Commencement
 - POB Point of Beginning



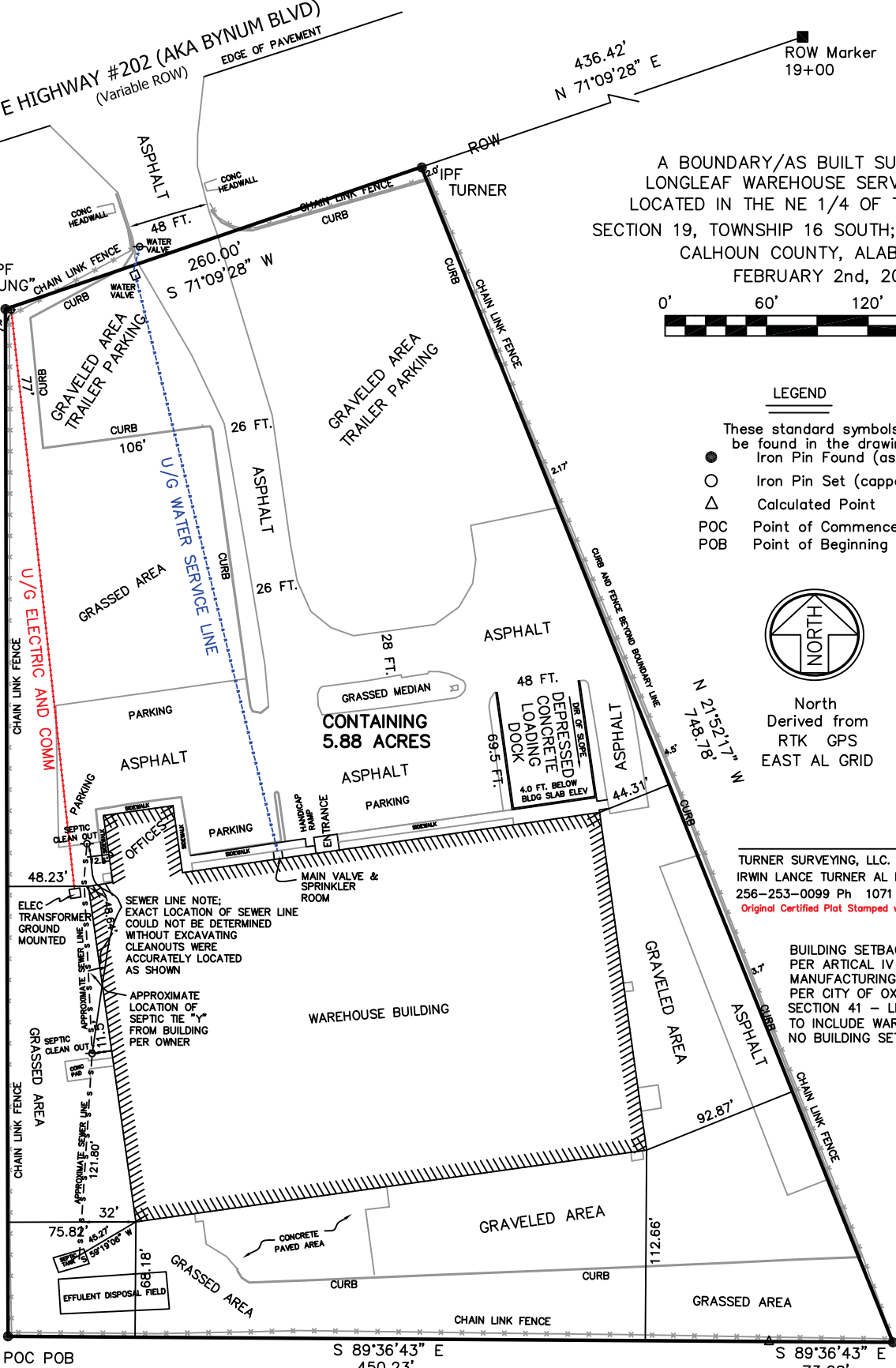
North
Derived from
RTK GPS
EAST AL GRID

TURNER SURVEYING, LLC.
IRWIN LANCE TURNER AL REG. # 24030
256-253-0099 Ph 1071 CR 2, Delta, AL 36258
Original Certified Plot Stamped w/ Red Ink

BUILDING SETBACK NOTE;
PER ARTICAL IV
MANUFACTURING DISTRICT REGULATIONS
PER CITY OF OXFORD ORD. NO 92-294
SECTION 41 - LIGHT MANUFACTURING
TO INCLUDE WAREHOUSES
NO BUILDING SET BACKS APPLY

SW CORNER OF
NE 1/4 OF SE 1/4
SECTION 19
T-16-S; R-7-E
CALHOUN CO., AL.

IPF CRIMPED
TOP PIPE



POC POB

S 89°36'43" E
450.23'

S 89°36'43" E
73.28'

IPF
CAPPED
RFBAR

Call Joe Warren for more information

managed exclusively by
Smiser Family Properties

Tel 619/342-7207 x5

WEBSITE WWW.SMISER.NET

Email HELP@smiser.net